

# **Power Supply Procurement Plan 2026**

**Grid**

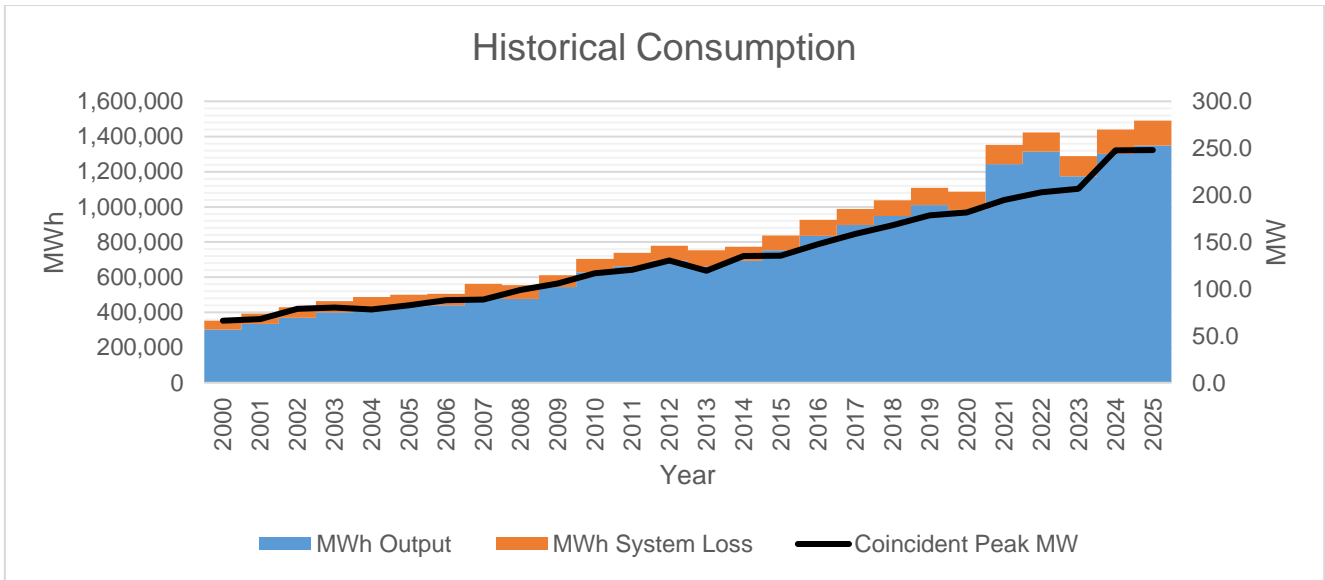
# Historical Consumption Data

|      | Coincident Peak MW | MWh Offtake | WESM    | MWh Input | MWh Output | MWh System Loss | Load Factor | Discrepancy | Transm'n Loss | System Loss |
|------|--------------------|-------------|---------|-----------|------------|-----------------|-------------|-------------|---------------|-------------|
| 2000 | 66.18              | 353,851     | 0       | 353,851   | 301,419    | 52,432          | 61%         | 0.00%       | 0.00%         | 14.82%      |
| 2001 | 67.98              | 393,412     | 0       | 393,412   | 335,137    | 58,275          | 66%         | 0.00%       | 0.00%         | 14.81%      |
| 2002 | 78.93              | 430,199     | 0       | 430,199   | 368,786    | 61,414          | 62%         | 0.00%       | 0.00%         | 14.28%      |
| 2003 | 80.18              | 464,044     | 0       | 464,044   | 400,716    | 63,328          | 66%         | 0.00%       | 0.00%         | 13.65%      |
| 2004 | 78.28              | 487,625     | 0       | 487,625   | 418,544    | 69,081          | 71%         | 0.00%       | 0.00%         | 14.17%      |
| 2005 | 82.64              | 500,235     | 0       | 500,235   | 434,555    | 65,681          | 69%         | 0.00%       | 0.00%         | 13.13%      |
| 2006 | 87.97              | 506,724     | 0       | 506,724   | 440,952    | 65,772          | 66%         | 0.00%       | 0.00%         | 12.98%      |
| 2007 | 88.68              | 562,235     | 0       | 562,235   | 486,923    | 75,313          | 72%         | 0.00%       | 0.00%         | 13.40%      |
| 2008 | 99.03              | 555,391     | 0       | 555,391   | 476,812    | 78,580          | 64%         | 0.00%       | 0.00%         | 14.15%      |
| 2009 | 105.95             | 611,760     | 0       | 611,760   | 543,732    | 68,028          | 66%         | 0.00%       | 0.00%         | 11.12%      |
| 2010 | 116.85             | 704,984     | 62,229  | 704,984   | 627,637    | 77,347          | 69%         | 0.00%       | 0.00%         | 10.97%      |
| 2011 | 120.49             | 739,494     | 29,020  | 739,494   | 662,627    | 76,867          | 70%         | 0.00%       | 0.00%         | 10.39%      |
| 2012 | 130.23             | 779,233     | 50,107  | 779,233   | 693,679    | 85,554          | 68%         | 0.00%       | 0.00%         | 10.98%      |
| 2013 | 119.32             | 753,282     | 371,371 | 753,282   | 663,242    | 90,040          | 72%         | 0.00%       | 0.00%         | 11.95%      |
| 2014 | 135.05             | 777,732     | 268,880 | 761,959   | 693,413    | 80,481          | 64%         | 1.57%       | 2.03%         | 10.56%      |
| 2015 | 135.32             | 834,965     | 195,254 | 815,688   | 753,626    | 83,135          | 69%         | 2.58%       | 2.31%         | 10.19%      |
| 2016 | 147.66             | 921,664     | 192,325 | 901,841   | 836,211    | 90,052          | 70%         | 2.71%       | 2.15%         | 9.99%       |
| 2017 | 158.84             | 878,862     | 161,043 | 861,951   | 896,308    | 91,964          | 62%         | 14.66%      | 1.92%         | 10.67%      |
| 2018 | 167.80             | 889,945     | 215,422 | 876,209   | 948,878    | 88,068          | 60%         | 18.34%      | 1.54%         | 10.05%      |
| 2019 | 178.59             | 970,545     | 349,256 | 957,024   | 1,010,060  | 97,557          | 61%         | 15.74%      | 1.39%         | 10.19%      |
| 2020 | 181.39             | 949,119     | 117,297 | 936,227   | 983,216    | 102,971         | 59%         | 16.02%      | 1.36%         | 11.00%      |
| 2021 | 195.00             | 1,193,558   | 339,597 | 1,179,866 | 1,243,829  | 108,072         | 69%         | 14.58%      | 1.15%         | 9.16%       |
| 2022 | 202.87             | 1,245,721   | 276,638 | 1,227,812 | 1,313,388  | 109,341         | 69%         | 15.88%      | 1.44%         | 8.91%       |
| 2023 | 206.92             | 1,312,654   | 338,048 | 1,288,605 | 1,174,194  | 114,411         | 71%         | 0.00%       | 1.83%         | 8.88%       |
| 2024 | 247.83             | 1,464,330   | 483,252 | 1,439,920 | 1,300,690  | 139,230         | 66%         | 0.00%       | 1.67%         | 9.67%       |
| 2025 | 248.05             | 1,513,649   | 511,088 | 1,489,888 | 1,347,951  | 141,937         | 69%         | 0.00%       | 1.57%         | 9.53%       |

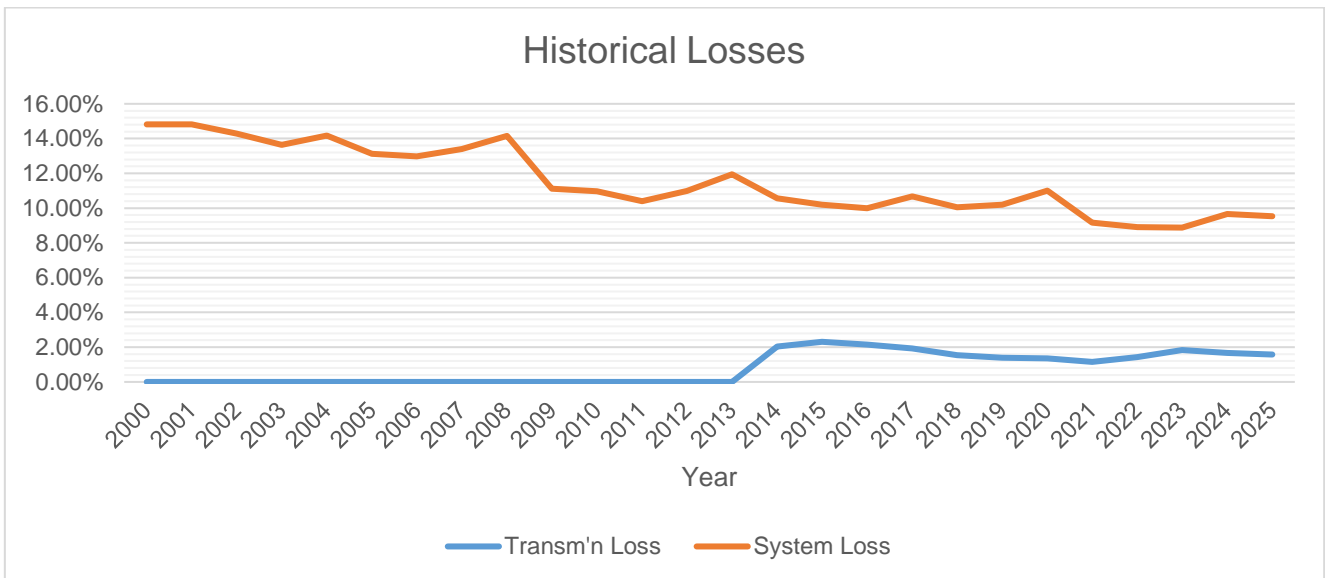
Peak demand increased from 247.83 MW in 2024 to 248.05 MW in 2025, reflecting a growth rate of 0.09%, attributable to the cooperative's demand growth driven by increased electricity consumption activities of BATELEC II's member-consumer-owners.

Similarly, MWh offtake rose from 1,464,330 MWh in 2024 to 1,513,649 MWh in 2025, representing a 3.37% increase, likewise due to higher demand among member-consumer-owners.

Within the same period, the load factor was recorded at around 69%, indicating improved system utilization, while the increase in overall consumption in 2025 is attributed to on-grid energy growth of BATELEC II.

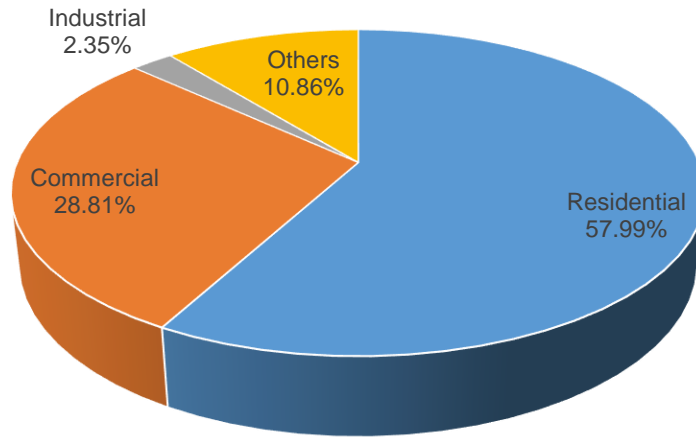


MWh output increased from 2024 to 2025 by 3.63%, while MWh system loss increased by 1.94% over the same period.



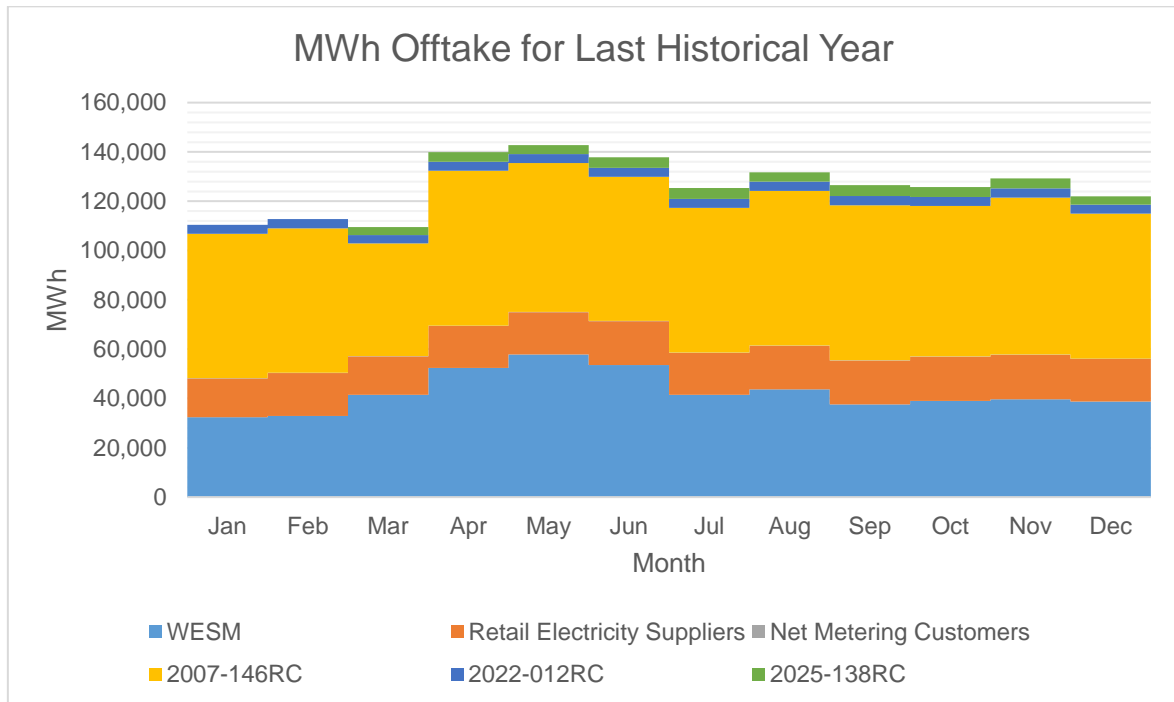
Historically, Transmission Loss ranged from 1.15% (2021) to 2.31% (2015) while System Loss ranged from 9.53% (2025) to 14.82% (2000). Transmission Loss peaked at 2.31% on year 2015 because it was the first whole year transition period of BATELEC II with customer under Retail Electricity Supplier (RES). System Loss peaked at 14.82% on year 2000 because of pilferages and other technical losses such as lengthy lines, existing old meters and equipment, inadequate size of conductors and etc.

### Previous Year's Shares of Energy Sales

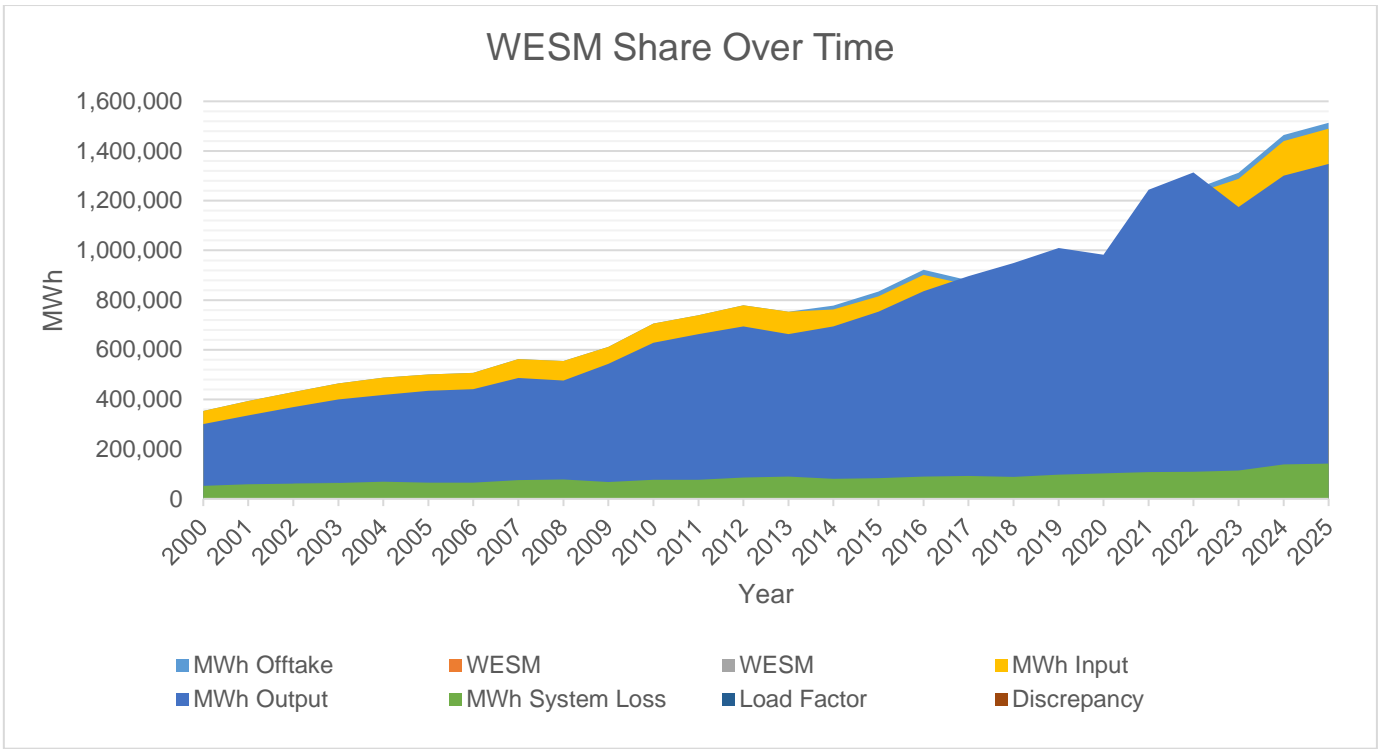


Residential customers account for the bulk of energy sales at 60.32% to the high number of connections. In contrast, customers under classification of Industrial customers accounted for only 1.23% of energy sales due to low number of connections.

### MWh Offtake for Last Historical Year

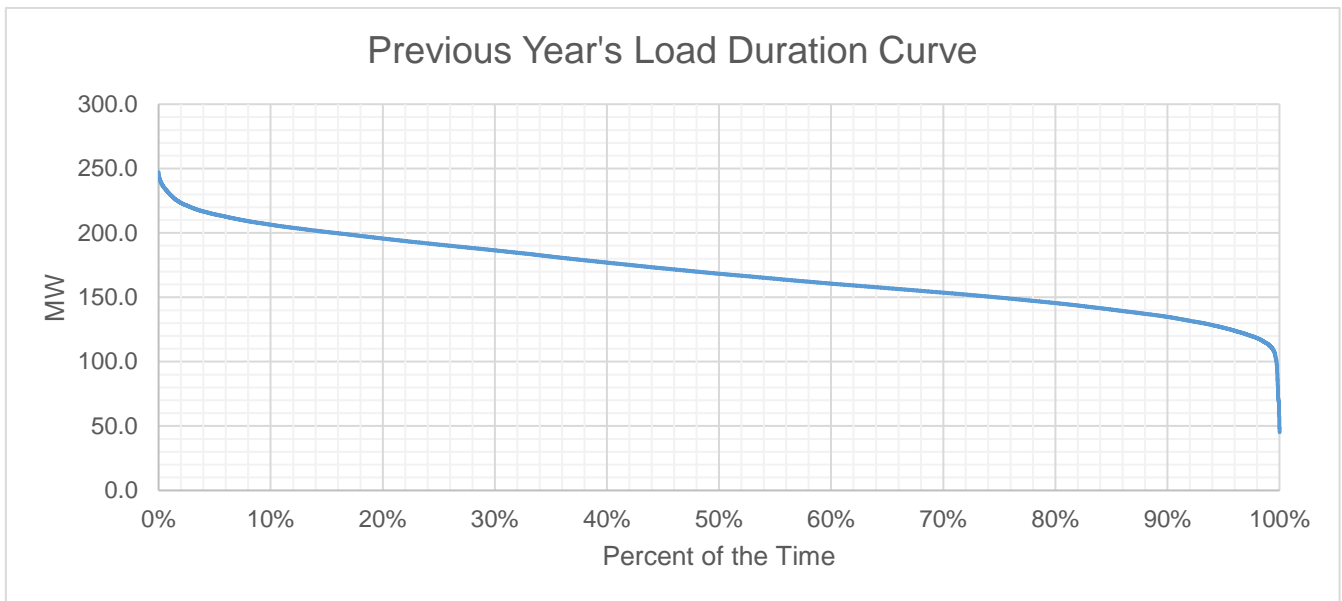


For GNPowr Mariveles Energy Center Ltd Co., the total Offtake for the last historical year (2025) is within the quantity stipulated in the PSA. The PSA with GNPowr Mariveles Energy Center Ltd Co. accounts for the bulk of MWh Offtake.

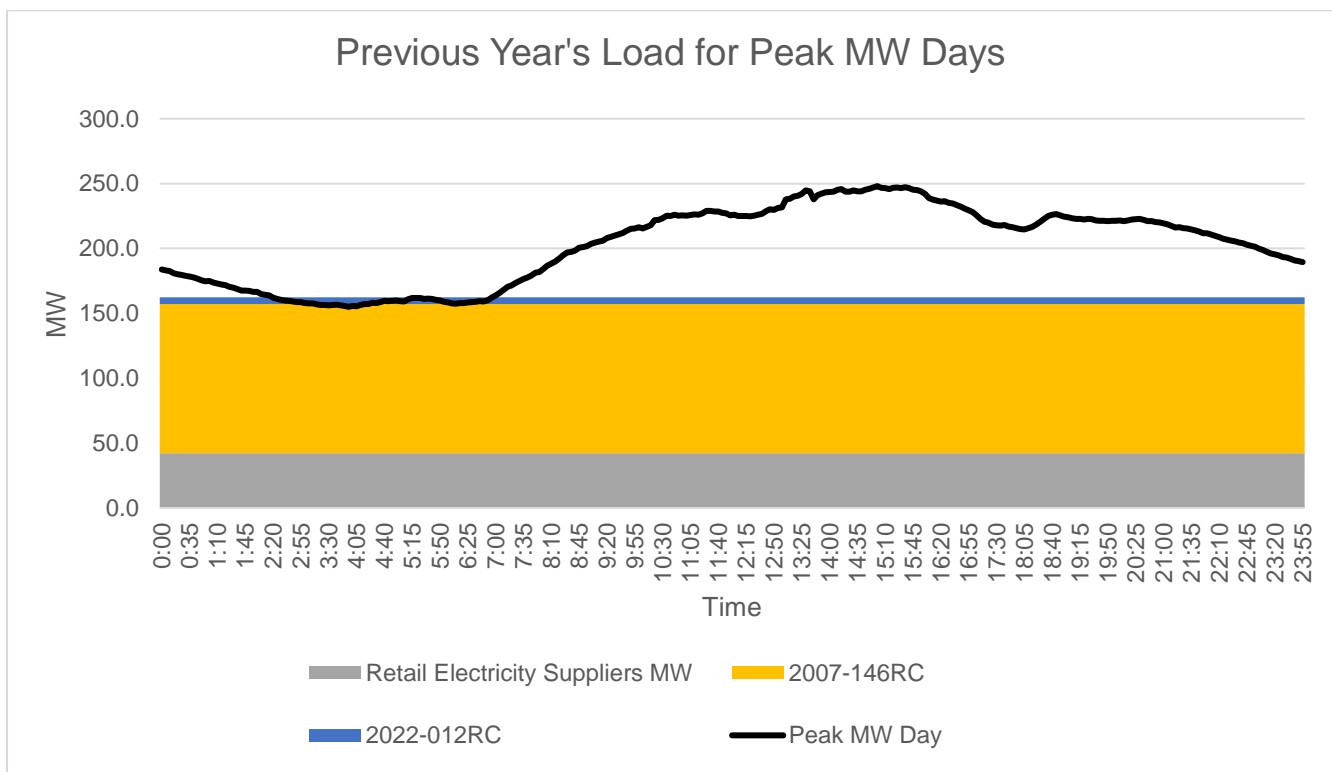


WESM Offtake increased from 483,252 MWh in 2024 to 511,088 MWh in 2025 at a rate of 3.22% due to load growth requirement in the franchise area.

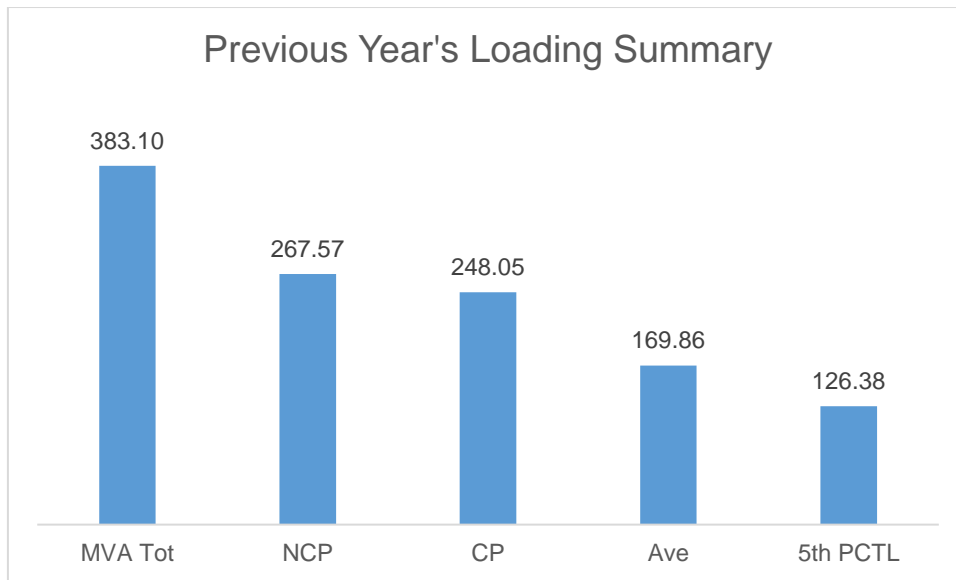
# Previous Year's Load Profile



Based on the Load Duration Curve, the minimum load is 45.1735 MW and the maximum load is 248.052 MW for the last historical year.



Peak MW occurred on April 22, 2025 at 03.00 PM.



The Non-coincident Peak Demand is 267.57 MW, which is around 69.84% of the total substation capacity of 383.1 MVA at a power factor of 96.75%. The load factor or the ratio between the Average Load of 169.86 MW and the Non-coincident Peak Demand is 63.48%. A safe estimate of the true minimum load is the fifth percentile load of 126.38 MW which is 47.23% of the Non-coincident Peak Demand.

| Metering Point    | Substation MVA | Substation Peak MW |
|-------------------|----------------|--------------------|
| MF3MBTNBAT203     | 55             | 11.147             |
| MF3MBTNBAT204     | 35             | 11.088             |
| MF3MBYZBAT208 ADJ | 70             | 58.385             |
| MF3MBTNBAT212     | 20             | 15.614             |
| MF3MBTNBAT214     | 20             | 27.266             |
| MF3MBTNBAT215     | 12.5           | 3.518              |
| MF3MBTNBAT216     | 10             | 8.333              |
| MF3MBTNBAT217     | 10             | 0.223              |
| MF3MBTNBAT220     | 10             | 6.098              |
| MF3MBTNBAT222     | 65.6           | 71.901             |
| MF3MBTNBAT223     | 10             | 16.511             |
| MF3MBTNBAT224     | 40             | 21.108             |
| MF3MBTNBAT225     | 10             | 5.942              |
| MF3MBTNBAT226     | 15             | 10.433             |

The substations loaded at above 70% will be solved by load transferring and / or installation of new transformer and by power transformer upgrading.

# Forecasted Consumption Data

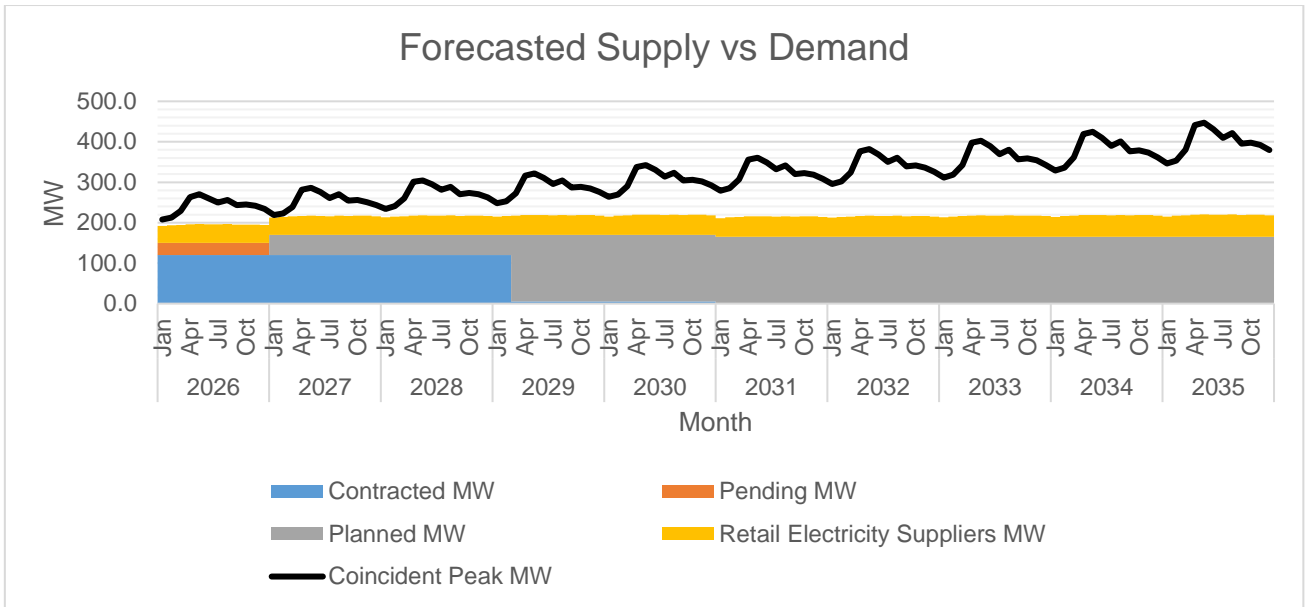
|      |     | Coincident Peak MW | Contracted MW | Pending MW | Planned MW | Retail Electricity Suppliers MW | Existing Contracting Level | Target Contracting Level | MW Surplus / Deficit |
|------|-----|--------------------|---------------|------------|------------|---------------------------------|----------------------------|--------------------------|----------------------|
| 2026 | Jan | 207.89             | 120.00        | 30.00      | 0.000      | 42.26                           | 72%                        | 91%                      | -15.64               |
|      | Feb | 212.65             | 120.00        | 30.00      | 0.000      | 43.84                           | 71%                        | 89%                      | -18.81               |
|      | Mar | 229.52             | 120.00        | 30.00      | 0.000      | 44.76                           | 65%                        | 81%                      | -34.76               |
|      | Apr | 263.32             | 120.00        | 30.00      | 0.000      | 45.93                           | 55%                        | 69%                      | -67.39               |
|      | May | 270.36             | 120.00        | 30.00      | 0.000      | 46.48                           | 54%                        | 67%                      | -73.88               |
|      | Jun | 260.20             | 120.00        | 30.00      | 0.000      | 45.79                           | 56%                        | 70%                      | -64.41               |
|      | Jul | 249.54             | 120.00        | 30.00      | 0.000      | 45.75                           | 59%                        | 74%                      | -53.79               |
|      | Aug | 256.16             | 120.00        | 30.00      | 0.000      | 46.54                           | 57%                        | 72%                      | -59.62               |
|      | Sep | 243.20             | 120.00        | 30.00      | 0.000      | 44.94                           | 61%                        | 76%                      | -48.26               |
|      | Oct | 245.27             | 120.00        | 30.00      | 0.000      | 45.12                           | 60%                        | 75%                      | -50.15               |
|      | Nov | 242.02             | 120.00        | 30.00      | 0.000      | 45.16                           | 61%                        | 76%                      | -46.86               |
|      | Dec | 234.27             | 120.00        | 30.00      | 0.000      | 44.08                           | 63%                        | 79%                      | -40.19               |
| 2027 | Jan | 219.29             | 120.00        | 0.00       | 50.000     | 42.33                           | 68%                        | 96%                      | -6.96                |
|      | Feb | 222.59             | 120.00        | 0.00       | 50.000     | 44.23                           | 67%                        | 95%                      | -8.36                |
|      | Mar | 238.71             | 120.00        | 0.00       | 50.000     | 45.51                           | 62%                        | 88%                      | -23.20               |
|      | Apr | 281.14             | 120.00        | 0.00       | 50.000     | 46.66                           | 51%                        | 73%                      | -64.48               |
|      | May | 285.87             | 120.00        | 0.00       | 50.000     | 47.07                           | 50%                        | 71%                      | -68.81               |
|      | Jun | 275.89             | 120.00        | 0.00       | 50.000     | 46.63                           | 52%                        | 74%                      | -59.26               |
|      | Jul | 260.56             | 120.00        | 0.00       | 50.000     | 46.18                           | 56%                        | 79%                      | -44.38               |
|      | Aug | 270.17             | 120.00        | 0.00       | 50.000     | 47.29                           | 54%                        | 76%                      | -52.88               |
|      | Sep | 254.55             | 120.00        | 0.00       | 50.000     | 46.57                           | 58%                        | 82%                      | -37.98               |
|      | Oct | 255.78             | 120.00        | 0.00       | 50.000     | 47.00                           | 57%                        | 81%                      | -38.78               |
|      | Nov | 250.97             | 120.00        | 0.00       | 50.000     | 47.10                           | 59%                        | 83%                      | -33.87               |
|      | Dec | 243.40             | 120.00        | 0.00       | 50.000     | 45.68                           | 61%                        | 86%                      | -27.73               |
| 2028 | Jan | 234.21             | 120.00        | 0.00       | 50.000     | 43.61                           | 63%                        | 89%                      | -20.59               |
|      | Feb | 240.86             | 120.00        | 0.00       | 50.000     | 45.40                           | 61%                        | 87%                      | -25.46               |
|      | Mar | 260.21             | 120.00        | 0.00       | 50.000     | 46.18                           | 56%                        | 79%                      | -44.03               |
|      | Apr | 300.89             | 120.00        | 0.00       | 50.000     | 47.37                           | 47%                        | 67%                      | -83.52               |
|      | May | 304.06             | 120.00        | 0.00       | 50.000     | 47.94                           | 47%                        | 66%                      | -86.12               |
|      | Jun | 294.67             | 120.00        | 0.00       | 50.000     | 47.41                           | 49%                        | 69%                      | -77.26               |
|      | Jul | 281.21             | 120.00        | 0.00       | 50.000     | 47.18                           | 51%                        | 73%                      | -64.03               |
|      | Aug | 288.96             | 120.00        | 0.00       | 50.000     | 47.91                           | 50%                        | 71%                      | -71.05               |

|      |     | Coincident Peak MW | Contracted MW | Pending MW | Planned MW | Retail Electricity Suppliers MW | Existing Contracting Level | Target Contracting Level | MW Surplus / Deficit |
|------|-----|--------------------|---------------|------------|------------|---------------------------------|----------------------------|--------------------------|----------------------|
|      | Sep | 270.47             | 120.00        | 0.00       | 50.000     | 46.91                           | 54%                        | 76%                      | -53.56               |
|      | Oct | 273.22             | 120.00        | 0.00       | 50.000     | 47.53                           | 53%                        | 75%                      | -55.69               |
|      | Nov | 270.72             | 120.00        | 0.00       | 50.000     | 47.47                           | 54%                        | 76%                      | -53.25               |
|      | Dec | 262.51             | 120.00        | 0.00       | 50.000     | 46.52                           | 56%                        | 79%                      | -45.99               |
| 2029 | Jan | 247.95             | 120.00        | 0.00       | 50.000     | 44.65                           | 59%                        | 84%                      | -33.30               |
|      | Feb | 253.28             | 120.00        | 0.00       | 50.000     | 46.48                           | 58%                        | 82%                      | -36.80               |
|      | Mar | 272.73             | 5.00          | 0.00       | 165.000    | 47.52                           | 2%                         | 75%                      | -55.21               |
|      | Apr | 316.27             | 5.00          | 0.00       | 165.000    | 48.74                           | 2%                         | 64%                      | -97.53               |
|      | May | 321.78             | 5.00          | 0.00       | 165.000    | 49.26                           | 2%                         | 62%                      | -102.52              |
|      | Jun | 310.52             | 5.00          | 0.00       | 165.000    | 48.68                           | 2%                         | 65%                      | -91.84               |
|      | Jul | 295.64             | 5.00          | 0.00       | 165.000    | 48.43                           | 2%                         | 69%                      | -77.21               |
|      | Aug | 304.42             | 5.00          | 0.00       | 165.000    | 49.34                           | 2%                         | 67%                      | -85.08               |
|      | Sep | 286.77             | 5.00          | 0.00       | 165.000    | 48.18                           | 2%                         | 71%                      | -68.59               |
|      | Oct | 288.86             | 5.00          | 0.00       | 165.000    | 48.60                           | 2%                         | 71%                      | -70.26               |
|      | Nov | 284.75             | 5.00          | 0.00       | 165.000    | 48.62                           | 2%                         | 72%                      | -66.13               |
|      | Dec | 275.82             | 5.00          | 0.00       | 165.000    | 47.42                           | 2%                         | 74%                      | -58.40               |
| 2030 | Jan | 264.00             | 5.00          | 0.00       | 165.000    | 45.33                           | 2%                         | 78%                      | -48.67               |
|      | Feb | 269.55             | 5.00          | 0.00       | 165.000    | 47.24                           | 2%                         | 76%                      | -52.30               |
|      | Mar | 289.99             | 5.00          | 0.00       | 165.000    | 48.32                           | 2%                         | 70%                      | -71.68               |
|      | Apr | 337.49             | 5.00          | 0.00       | 165.000    | 49.55                           | 2%                         | 59%                      | -117.95              |
|      | May | 342.32             | 5.00          | 0.00       | 165.000    | 50.07                           | 2%                         | 58%                      | -122.26              |
|      | Jun | 330.62             | 5.00          | 0.00       | 165.000    | 49.53                           | 2%                         | 60%                      | -111.10              |
|      | Jul | 314.00             | 5.00          | 0.00       | 165.000    | 49.20                           | 2%                         | 64%                      | -94.80               |
|      | Aug | 323.65             | 5.00          | 0.00       | 165.000    | 50.15                           | 2%                         | 62%                      | -103.50              |
|      | Sep | 304.08             | 5.00          | 0.00       | 165.000    | 49.15                           | 2%                         | 67%                      | -84.93               |
|      | Oct | 306.16             | 5.00          | 0.00       | 165.000    | 49.66                           | 2%                         | 66%                      | -86.50               |
|      | Nov | 301.68             | 5.00          | 0.00       | 165.000    | 49.68                           | 2%                         | 67%                      | -82.01               |
|      | Dec | 292.28             | 5.00          | 0.00       | 165.000    | 48.43                           | 2%                         | 70%                      | -73.85               |
| 2031 | Jan | 278.74             | 0.00          | 0.00       | 165.000    | 46.44                           | 0%                         | 71%                      | -67.30               |
|      | Feb | 285.18             | 0.00          | 0.00       | 165.000    | 48.36                           | 0%                         | 70%                      | -71.82               |
|      | Mar | 307.16             | 0.00          | 0.00       | 165.000    | 49.36                           | 0%                         | 64%                      | -92.80               |
|      | Apr | 356.09             | 0.00          | 0.00       | 165.000    | 50.62                           | 0%                         | 54%                      | -140.46              |
|      | May | 360.90             | 0.00          | 0.00       | 165.000    | 51.18                           | 0%                         | 53%                      | -144.73              |
|      | Jun | 348.68             | 0.00          | 0.00       | 165.000    | 50.60                           | 0%                         | 55%                      | -133.08              |
|      | Jul | 331.78             | 0.00          | 0.00       | 165.000    | 50.32                           | 0%                         | 59%                      | -116.47              |

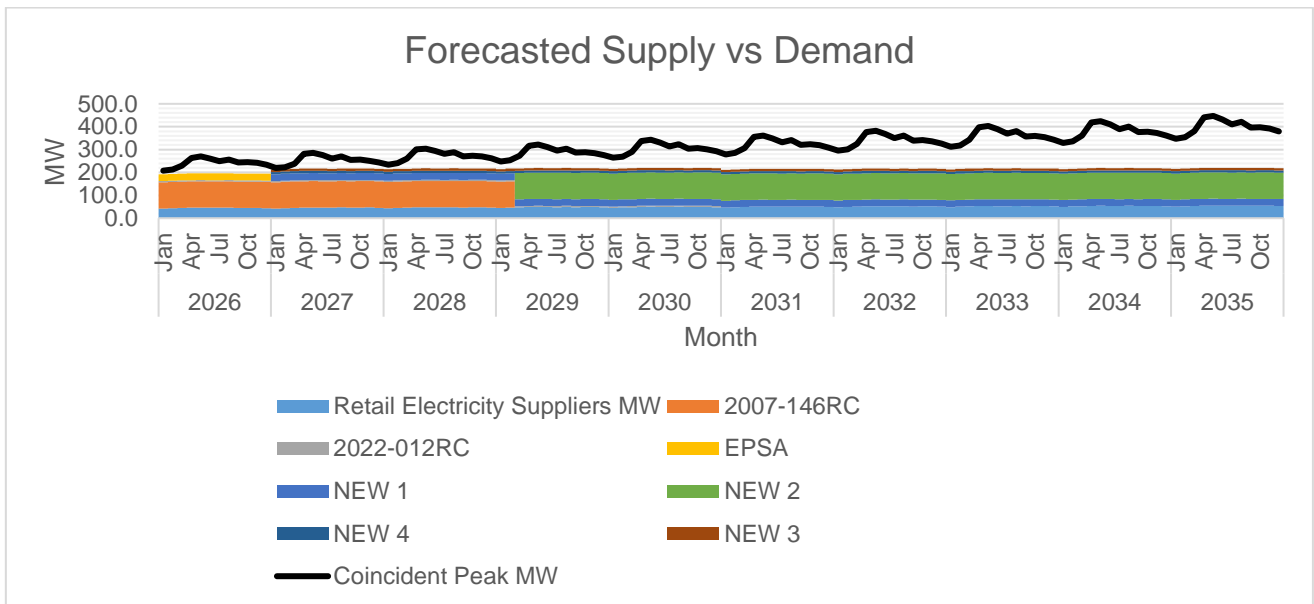
|      |     | Coincident Peak MW | Contracted MW | Pending MW | Planned MW | Retail Electricity Suppliers MW | Existing Contracting Level | Target Contracting Level | MW Surplus / Deficit |
|------|-----|--------------------|---------------|------------|------------|---------------------------------|----------------------------|--------------------------|----------------------|
|      | Aug | 341.34             | 0.00          | 0.00       | 165.000    | 51.21                           | 0%                         | 57%                      | -125.12              |
|      | Sep | 320.41             | 0.00          | 0.00       | 165.000    | 50.11                           | 0%                         | 61%                      | -105.30              |
|      | Oct | 322.85             | 0.00          | 0.00       | 165.000    | 50.65                           | 0%                         | 61%                      | -107.20              |
|      | Nov | 318.59             | 0.00          | 0.00       | 165.000    | 50.64                           | 0%                         | 62%                      | -102.96              |
|      | Dec | 308.58             | 0.00          | 0.00       | 165.000    | 49.45                           | 0%                         | 64%                      | -94.12               |
| 2032 | Jan | 295.38             | 0.00          | 0.00       | 165.000    | 47.35                           | 0%                         | 67%                      | -83.03               |
|      | Feb | 301.68             | 0.00          | 0.00       | 165.000    | 49.31                           | 0%                         | 65%                      | -87.36               |
|      | Mar | 324.60             | 0.00          | 0.00       | 165.000    | 50.39                           | 0%                         | 60%                      | -109.21              |
|      | Apr | 376.62             | 0.00          | 0.00       | 165.000    | 51.67                           | 0%                         | 51%                      | -159.95              |
|      | May | 382.10             | 0.00          | 0.00       | 165.000    | 52.22                           | 0%                         | 50%                      | -164.88              |
|      | Jun | 368.78             | 0.00          | 0.00       | 165.000    | 51.63                           | 0%                         | 52%                      | -152.15              |
|      | Jul | 350.57             | 0.00          | 0.00       | 165.000    | 51.33                           | 0%                         | 55%                      | -134.24              |
|      | Aug | 360.81             | 0.00          | 0.00       | 165.000    | 52.28                           | 0%                         | 53%                      | -143.53              |
|      | Sep | 339.02             | 0.00          | 0.00       | 165.000    | 51.15                           | 0%                         | 57%                      | -122.87              |
|      | Oct | 341.30             | 0.00          | 0.00       | 165.000    | 51.65                           | 0%                         | 57%                      | -124.65              |
|      | Nov | 336.34             | 0.00          | 0.00       | 165.000    | 51.66                           | 0%                         | 58%                      | -119.69              |
|      | Dec | 325.64             | 0.00          | 0.00       | 165.000    | 50.39                           | 0%                         | 60%                      | -110.25              |
| 2033 | Jan | 311.74             | 0.00          | 0.00       | 165.000    | 48.31                           | 0%                         | 63%                      | -98.44               |
|      | Feb | 318.38             | 0.00          | 0.00       | 165.000    | 50.32                           | 0%                         | 62%                      | -103.06              |
|      | Mar | 342.50             | 0.00          | 0.00       | 165.000    | 51.41                           | 0%                         | 57%                      | -126.10              |
|      | Apr | 397.49             | 0.00          | 0.00       | 165.000    | 52.71                           | 0%                         | 48%                      | -179.78              |
|      | May | 402.90             | 0.00          | 0.00       | 165.000    | 53.27                           | 0%                         | 47%                      | -184.63              |
|      | Jun | 388.89             | 0.00          | 0.00       | 165.000    | 52.67                           | 0%                         | 49%                      | -171.21              |
|      | Jul | 369.51             | 0.00          | 0.00       | 165.000    | 52.35                           | 0%                         | 52%                      | -152.15              |
|      | Aug | 380.25             | 0.00          | 0.00       | 165.000    | 53.32                           | 0%                         | 50%                      | -161.93              |
|      | Sep | 357.00             | 0.00          | 0.00       | 165.000    | 52.20                           | 0%                         | 54%                      | -139.80              |
|      | Oct | 359.34             | 0.00          | 0.00       | 165.000    | 52.73                           | 0%                         | 54%                      | -141.61              |
|      | Nov | 354.11             | 0.00          | 0.00       | 165.000    | 52.73                           | 0%                         | 55%                      | -136.38              |
|      | Dec | 342.80             | 0.00          | 0.00       | 165.000    | 51.45                           | 0%                         | 57%                      | -126.36              |
| 2034 | Jan | 329.03             | 0.00          | 0.00       | 165.000    | 49.30                           | 0%                         | 59%                      | -114.73              |
|      | Feb | 336.06             | 0.00          | 0.00       | 165.000    | 51.34                           | 0%                         | 58%                      | -119.73              |
|      | Mar | 361.52             | 0.00          | 0.00       | 165.000    | 52.43                           | 0%                         | 53%                      | -144.09              |
|      | Apr | 419.17             | 0.00          | 0.00       | 165.000    | 53.76                           | 0%                         | 45%                      | -200.41              |
|      | May | 424.79             | 0.00          | 0.00       | 165.000    | 54.34                           | 0%                         | 45%                      | -205.45              |
|      | Jun | 409.94             | 0.00          | 0.00       | 165.000    | 53.72                           | 0%                         | 46%                      | -191.22              |

|      |     | Coincident Peak MW | Contracted MW | Pending MW | Planned MW | Retail Electricity Suppliers MW | Existing Contracting Level | Target Contracting Level | MW Surplus / Deficit |
|------|-----|--------------------|---------------|------------|------------|---------------------------------|----------------------------|--------------------------|----------------------|
|      | Jul | 389.57             | 0.00          | 0.00       | 165.000    | 53.40                           | 0%                         | 49%                      | -171.17              |
|      | Aug | 400.69             | 0.00          | 0.00       | 165.000    | 54.37                           | 0%                         | 48%                      | -181.32              |
|      | Sep | 376.09             | 0.00          | 0.00       | 165.000    | 53.21                           | 0%                         | 51%                      | -157.89              |
|      | Oct | 378.54             | 0.00          | 0.00       | 165.000    | 53.75                           | 0%                         | 51%                      | -159.79              |
|      | Nov | 373.04             | 0.00          | 0.00       | 165.000    | 53.75                           | 0%                         | 52%                      | -154.29              |
|      | Dec | 361.04             | 0.00          | 0.00       | 165.000    | 52.45                           | 0%                         | 53%                      | -143.59              |
| 2035 | Jan | 346.65             | 0.00          | 0.00       | 165.000    | 50.28                           | 0%                         | 56%                      | -131.37              |
|      | Feb | 353.88             | 0.00          | 0.00       | 165.000    | 52.37                           | 0%                         | 55%                      | -136.51              |
|      | Mar | 380.54             | 0.00          | 0.00       | 165.000    | 53.49                           | 0%                         | 50%                      | -162.04              |
|      | Apr | 441.26             | 0.00          | 0.00       | 165.000    | 54.85                           | 0%                         | 43%                      | -221.41              |
|      | May | 447.17             | 0.00          | 0.00       | 165.000    | 55.43                           | 0%                         | 42%                      | -226.74              |
|      | Jun | 431.38             | 0.00          | 0.00       | 165.000    | 54.80                           | 0%                         | 44%                      | -211.58              |
|      | Jul | 409.79             | 0.00          | 0.00       | 165.000    | 54.47                           | 0%                         | 46%                      | -190.31              |
|      | Aug | 421.46             | 0.00          | 0.00       | 165.000    | 55.47                           | 0%                         | 45%                      | -200.99              |
|      | Sep | 395.58             | 0.00          | 0.00       | 165.000    | 54.28                           | 0%                         | 48%                      | -176.31              |
|      | Oct | 398.02             | 0.00          | 0.00       | 165.000    | 54.82                           | 0%                         | 48%                      | -178.20              |
|      | Nov | 392.07             | 0.00          | 0.00       | 165.000    | 54.82                           | 0%                         | 49%                      | -172.24              |
|      | Dec | 379.37             | 0.00          | 0.00       | 165.000    | 53.48                           | 0%                         | 51%                      | -160.89              |

Peak demand was forecast using a time-series forecasting method and is projected to occur in May 2035, driven by heightened economic activities across various industries. Monthly peak demand is expected to be at its lowest in January 2026, attributed to cooler temperatures and a higher number of holidays, which reduce industrial and economic activities. Overall, peak demand is projected to increase at an average annual growth rate of 5.75%.



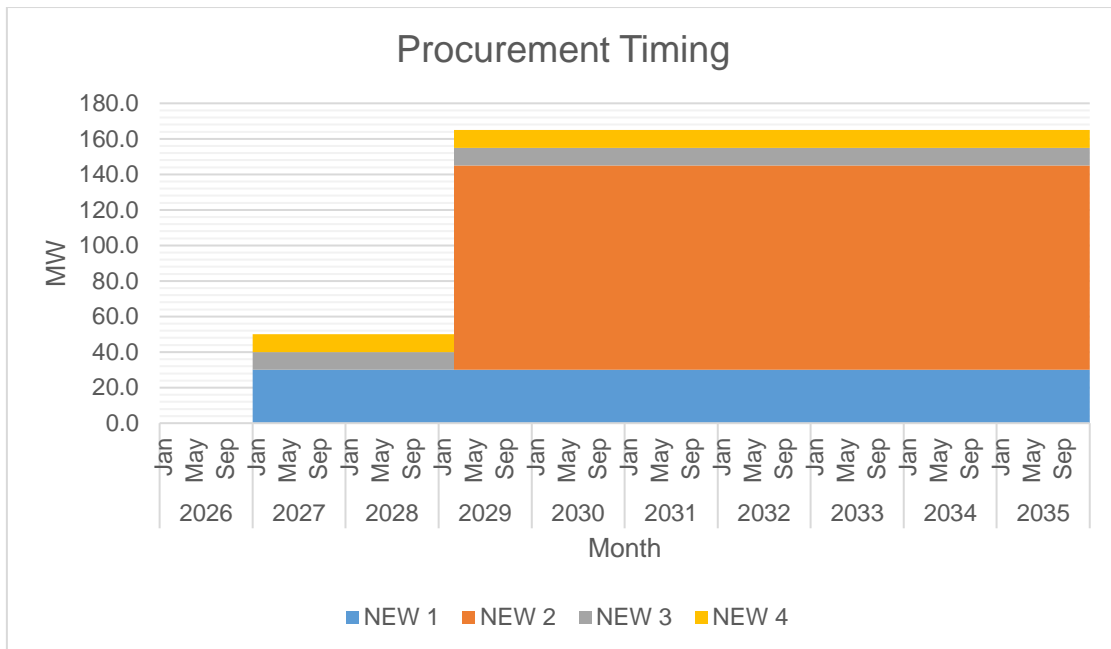
The available supply is generally below the Peak Demand however; any imbalances or additional energy requirement shall be sourced out from WESM.



The Cooperative's largest existing power supply contract is the 115 MW Power Supply Agreement (PSA) with GNPowder Mariveles Energy Center Ltd. Co., which remains in effect until 2029. This is followed by a 5 MW PSA with Bac-Man Geothermal, Inc. (BGI), valid until 2030.

In addition, BATELEC II has executed an Emergency Power Supply Agreement with Southwest Luzon Power Generation Corporation for the provision of 30 MW in 2026 to ensure supply adequacy during the transition period.

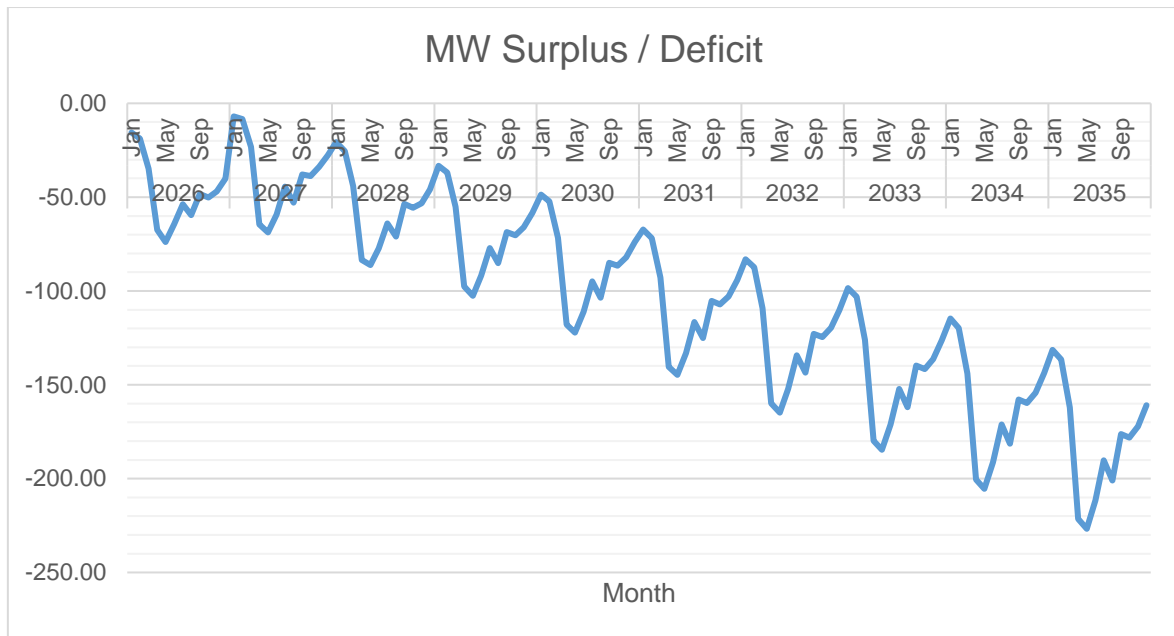
To further strengthen its supply position, the Cooperative has identified an additional 30 MW requirement to be sourced from renewable energy in compliance with the Renewable Portfolio Standard (RPS). This capacity is scheduled for procurement through a Competitive Selection Process (CSP). Likewise, a further 115 MW requirement for 2030 has been programmed for procurement to address projected load growth. To mitigate exposure to volatile prices in the Wholesale Electricity Spot Market (WESM), an additional 10 MW supply will also be secured by 2027. Moreover, a 10 MW embedded solar power project is expected to be operational by 2027, which will augment the Cooperative's supply portfolio and contribute to its renewable energy targets.



The first wave of supply procurement will be for 30 MW ,10 MW and another 10MW planned to be available by the billing month of January 2027.



For year 2026, existing contracting level is within the target contracting level. The highest target contracting level is 96.07% which is expected to occur on January 2027. The lowest target contracting level is 42.12% which is expected to occur from May 2035.



The highest deficit is 226.74 MW which is expected to occur on the month of on May 2035. The lowest deficit is 6.96 MW which is expected to occur on the month of January 2027.

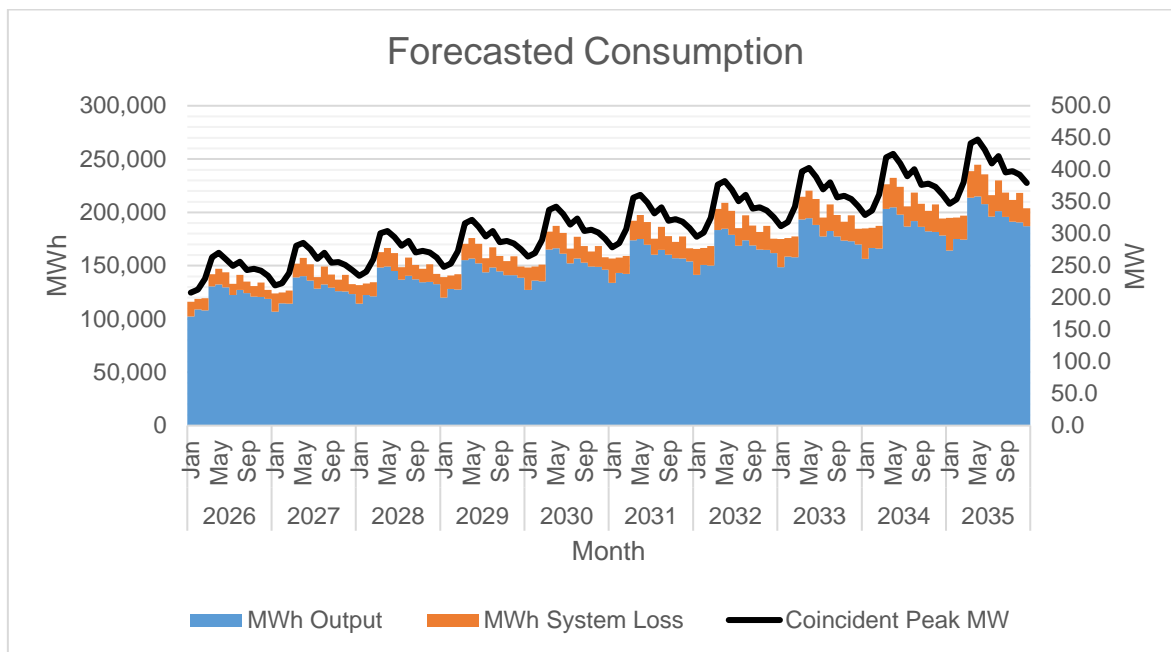
|      |     | MWh Offtake | MWh Output | MWh System Loss | Transm'n Loss | System Loss |
|------|-----|-------------|------------|-----------------|---------------|-------------|
| 2026 | Jan | 117,638     | 102,382    | 13,797          | 1.24%         | 11.88%      |
|      | Feb | 121,247     | 108,830    | 9,990           | 2.00%         | 8.41%       |
|      | Mar | 121,906     | 108,105    | 11,317          | 2.04%         | 9.48%       |
|      | Apr | 144,923     | 130,487    | 11,409          | 2.09%         | 8.04%       |
|      | May | 151,285     | 132,474    | 14,550          | 2.82%         | 9.90%       |
|      | Jun | 146,210     | 129,741    | 14,051          | 1.65%         | 9.77%       |
|      | Jul | 135,295     | 122,535    | 10,597          | 1.60%         | 7.96%       |
|      | Aug | 145,498     | 127,241    | 14,288          | 2.73%         | 10.10%      |
|      | Sep | 136,871     | 124,209    | 10,983          | 1.23%         | 8.12%       |
|      | Oct | 132,286     | 121,036    | 9,916           | 1.01%         | 7.57%       |
|      | Nov | 136,443     | 120,688    | 13,642          | 1.55%         | 10.16%      |
|      | Dec | 128,406     | 118,991    | 8,172           | 0.97%         | 6.43%       |
| 2027 | Jan | 125,435     | 106,989    | 16,895          | 1.24%         | 13.64%      |
|      | Feb | 127,501     | 114,591    | 10,349          | 2.01%         | 8.28%       |
|      | Mar | 129,345     | 114,353    | 12,359          | 2.04%         | 9.75%       |
|      | Apr | 155,193     | 138,846    | 13,109          | 2.09%         | 8.63%       |
|      | May | 161,939     | 140,311    | 17,000          | 2.86%         | 10.81%      |
|      | Jun | 153,931     | 135,934    | 15,450          | 1.66%         | 10.21%      |
|      | Jul | 141,552     | 128,435    | 10,857          | 1.60%         | 7.79%       |
|      | Aug | 153,361     | 132,535    | 16,644          | 2.73%         | 11.16%      |
|      | Sep | 143,510     | 129,380    | 12,372          | 1.23%         | 8.73%       |
|      | Oct | 138,356     | 125,954    | 11,009          | 1.01%         | 8.04%       |
|      | Nov | 143,754     | 125,776    | 15,755          | 1.55%         | 11.13%      |
|      | Dec | 133,934     | 123,487    | 9,154           | 0.97%         | 6.90%       |
| 2028 | Jan | 133,504     | 114,414    | 17,445          | 1.23%         | 13.23%      |
|      | Feb | 136,067     | 122,486    | 10,892          | 1.98%         | 8.17%       |
|      | Mar | 137,305     | 121,383    | 13,134          | 2.03%         | 9.76%       |
|      | Apr | 166,068     | 148,301    | 14,306          | 2.08%         | 8.80%       |

|      |     | MWh Offtake | MWh Output | MWh System Loss | Transm'n Loss | System Loss |
|------|-----|-------------|------------|-----------------|---------------|-------------|
|      | May | 171,596     | 149,284    | 17,414          | 2.85%         | 10.45%      |
|      | Jun | 164,378     | 144,861    | 16,808          | 1.65%         | 10.40%      |
|      | Jul | 150,977     | 136,867    | 11,709          | 1.59%         | 7.88%       |
|      | Aug | 162,121     | 140,447    | 17,262          | 2.72%         | 10.95%      |
|      | Sep | 152,576     | 137,211    | 13,507          | 1.22%         | 8.96%       |
|      | Oct | 148,447     | 134,576    | 12,386          | 1.00%         | 8.43%       |
|      | Nov | 153,592     | 134,850    | 16,375          | 1.54%         | 10.83%      |
|      | Dec | 143,682     | 132,543    | 9,761           | 0.96%         | 6.86%       |
| 2029 | Jan | 141,029     | 120,182    | 19,114          | 1.23%         | 13.72%      |
|      | Feb | 143,623     | 128,211    | 12,556          | 1.99%         | 8.92%       |
|      | Mar | 145,041     | 127,584    | 14,517          | 2.03%         | 10.22%      |
|      | Apr | 174,280     | 155,263    | 15,389          | 2.08%         | 9.02%       |
|      | May | 181,146     | 156,776    | 19,203          | 2.85%         | 10.91%      |
|      | Jun | 173,298     | 152,321    | 18,128          | 1.64%         | 10.64%      |
|      | Jul | 159,448     | 143,806    | 13,109          | 1.59%         | 8.35%       |
|      | Aug | 171,808     | 148,320    | 18,818          | 2.72%         | 11.26%      |
|      | Sep | 161,152     | 144,632    | 14,562          | 1.21%         | 9.15%       |
|      | Oct | 155,866     | 141,195    | 13,117          | 1.00%         | 8.50%       |
|      | Nov | 161,364     | 140,954    | 17,927          | 1.54%         | 11.28%      |
|      | Dec | 150,723     | 138,553    | 10,730          | 0.96%         | 7.19%       |
| 2030 | Jan | 150,057     | 127,279    | 20,943          | 1.22%         | 14.13%      |
|      | Feb | 152,350     | 135,981    | 13,350          | 1.98%         | 8.94%       |
|      | Mar | 154,030     | 135,381    | 15,537          | 2.02%         | 10.29%      |
|      | Apr | 185,805     | 165,170    | 16,776          | 2.08%         | 9.22%       |
|      | May | 192,730     | 166,462    | 20,781          | 2.85%         | 11.10%      |
|      | Jun | 183,775     | 161,299    | 19,465          | 1.64%         | 10.77%      |
|      | Jul | 168,815     | 152,253    | 13,892          | 1.58%         | 8.36%       |
|      | Aug | 181,939     | 156,660    | 20,344          | 2.71%         | 11.49%      |
|      | Sep | 170,550     | 152,705    | 15,787          | 1.21%         | 9.37%       |
|      | Oct | 164,990     | 149,159    | 14,198          | 0.99%         | 8.69%       |
|      | Nov | 170,972     | 148,955    | 19,397          | 1.53%         | 11.52%      |
|      | Dec | 159,389     | 146,277    | 11,601          | 0.95%         | 7.35%       |
| 2031 | Jan | 158,555     | 134,038    | 22,583          | 1.22%         | 14.42%      |
|      | Feb | 160,867     | 143,089    | 14,599          | 1.98%         | 9.26%       |
|      | Mar | 162,482     | 142,341    | 16,864          | 2.02%         | 10.59%      |
|      | Apr | 196,306     | 173,927    | 18,308          | 2.07%         | 9.52%       |
|      | May | 203,246     | 175,150    | 22,315          | 2.84%         | 11.30%      |
|      | Jun | 193,985     | 169,740    | 21,075          | 1.63%         | 11.04%      |
|      | Jul | 178,116     | 160,175    | 15,131          | 1.58%         | 8.63%       |
|      | Aug | 191,666     | 164,668    | 21,806          | 2.71%         | 11.69%      |
|      | Sep | 179,771     | 160,457    | 17,152          | 1.20%         | 9.66%       |
|      | Oct | 174,088     | 156,901    | 15,470          | 0.99%         | 8.97%       |
|      | Nov | 180,321     | 156,713    | 20,853          | 1.53%         | 11.74%      |
|      | Dec | 168,049     | 153,905    | 12,557          | 0.94%         | 7.54%       |
| 2032 | Jan | 167,821     | 141,350    | 24,433          | 1.21%         | 14.74%      |
|      | Feb | 170,067     | 150,750    | 15,971          | 1.97%         | 9.58%       |
|      | Mar | 171,795     | 150,146    | 18,195          | 2.01%         | 10.81%      |

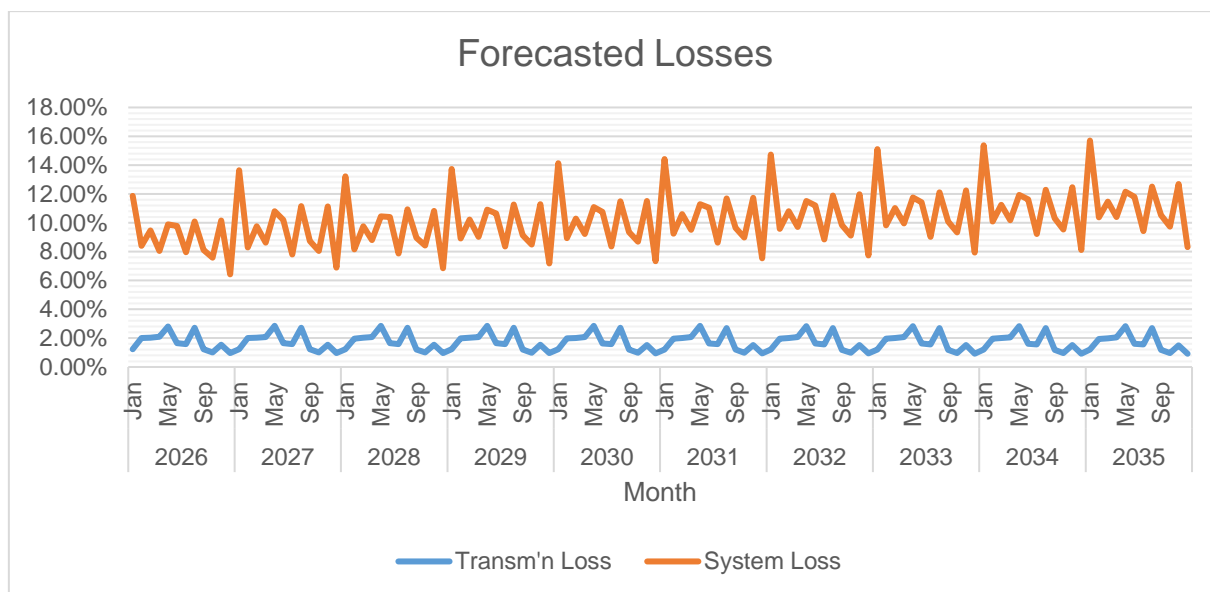
|      |     | MWh Offtake | MWh Output | MWh System Loss | Transm'n Loss | System Loss |
|------|-----|-------------|------------|-----------------|---------------|-------------|
|      | Apr | 207,467     | 183,452    | 19,721          | 2.07%         | 9.71%       |
|      | May | 214,934     | 184,771    | 24,060          | 2.84%         | 11.52%      |
|      | Jun | 204,927     | 178,997    | 22,594          | 1.63%         | 11.21%      |
|      | Jul | 188,179     | 168,847    | 16,374          | 1.57%         | 8.84%       |
|      | Aug | 202,596     | 173,691    | 23,428          | 2.70%         | 11.89%      |
|      | Sep | 189,836     | 169,103    | 18,463          | 1.20%         | 9.84%       |
|      | Oct | 183,566     | 165,190    | 16,578          | 0.98%         | 9.12%       |
|      | Nov | 190,142     | 164,805    | 22,444          | 1.52%         | 11.99%      |
|      | Dec | 177,055     | 161,813    | 13,583          | 0.94%         | 7.74%       |
| 2033 | Jan | 177,253     | 148,666    | 26,443          | 1.21%         | 15.10%      |
|      | Feb | 179,337     | 158,553    | 17,265          | 1.96%         | 9.82%       |
|      | Mar | 181,180     | 157,957    | 19,588          | 2.01%         | 11.03%      |
|      | Apr | 219,151     | 193,237    | 21,386          | 2.07%         | 9.96%       |
|      | May | 226,809     | 194,474    | 25,904          | 2.84%         | 11.75%      |
|      | Jun | 216,007     | 188,224    | 24,277          | 1.62%         | 11.42%      |
|      | Jul | 198,219     | 177,503    | 17,609          | 1.57%         | 9.03%       |
|      | Aug | 213,363     | 182,444    | 25,162          | 2.70%         | 12.12%      |
|      | Sep | 199,860     | 177,541    | 19,940          | 1.19%         | 10.10%      |
|      | Oct | 193,241     | 173,471    | 17,887          | 0.97%         | 9.35%       |
|      | Nov | 200,232     | 173,043    | 24,151          | 1.52%         | 12.25%      |
|      | Dec | 186,231     | 169,838    | 14,657          | 0.93%         | 7.94%       |
| 2034 | Jan | 187,114     | 156,419    | 28,442          | 1.20%         | 15.39%      |
|      | Feb | 189,136     | 166,726    | 18,712          | 1.96%         | 10.09%      |
|      | Mar | 191,018     | 166,129    | 21,068          | 2.00%         | 11.25%      |
|      | Apr | 231,246     | 203,400    | 23,077          | 2.06%         | 10.19%      |
|      | May | 239,135     | 204,612    | 27,754          | 2.83%         | 11.94%      |
|      | Jun | 227,662     | 197,968    | 26,011          | 1.62%         | 11.61%      |
|      | Jul | 208,864     | 186,637    | 18,965          | 1.56%         | 9.22%       |
|      | Aug | 224,703     | 191,766    | 26,889          | 2.69%         | 12.30%      |
|      | Sep | 210,476     | 186,518    | 21,447          | 1.19%         | 10.31%      |
|      | Oct | 203,451     | 182,257    | 19,223          | 0.97%         | 9.54%       |
|      | Nov | 210,792     | 181,743    | 25,863          | 1.51%         | 12.46%      |
|      | Dec | 195,925     | 178,348    | 15,763          | 0.93%         | 8.12%       |
| 2035 | Jan | 197,238     | 164,269    | 30,602          | 1.20%         | 15.70%      |
|      | Feb | 199,141     | 175,012    | 20,247          | 1.95%         | 10.37%      |
|      | Mar | 201,111     | 174,476    | 22,621          | 2.00%         | 11.48%      |
|      | Apr | 243,604     | 213,747    | 24,842          | 2.06%         | 10.41%      |
|      | May | 251,831     | 214,954    | 29,757          | 2.83%         | 12.16%      |
|      | Jun | 239,565     | 207,872    | 27,828          | 1.61%         | 11.81%      |
|      | Jul | 219,728     | 195,918    | 20,388          | 1.56%         | 9.43%       |
|      | Aug | 236,383     | 201,272    | 28,756          | 2.69%         | 12.50%      |
|      | Sep | 221,292     | 195,652    | 23,033          | 1.18%         | 10.53%      |
|      | Oct | 213,810     | 191,139    | 20,611          | 0.96%         | 9.73%       |
|      | Nov | 221,543     | 190,503    | 27,702          | 1.51%         | 12.70%      |
|      | Dec | 205,742     | 186,899    | 16,950          | 0.92%         | 8.32%       |

MWh Offtake was forecasted using time series forecasting.

System loss was calculated with mathematical representations on excel file. Based on the same study, the Distribution System can adequately convey electricity to customers.



MWh Output was expected to grow at a rate of 5.35% annually.



Based on forecasted losses for year 2026-2035, Transmission Loss is expected to a minimum of - 0.92% and maximum of 2.86%, while System Loss is expected to a minimum of 6.43% and maximum of 15.70%.

## Power Supply

| Case No.   | Type | GenCo                              | Minimum MW | Minimum MWh/yr | PSA Start | PSA End    |
|------------|------|------------------------------------|------------|----------------|-----------|------------|
| 2007-146RC | Base | GN Power Mariveles Coal Plant Ltd. | 115.00     | 563,316        | 2/26/2014 | 2/25/2029  |
| 2022-012RC | Base | Bac-Man Geothermal, Inc.           | 5.00       | 43,800         | 6/26/2022 | 12/25/2030 |

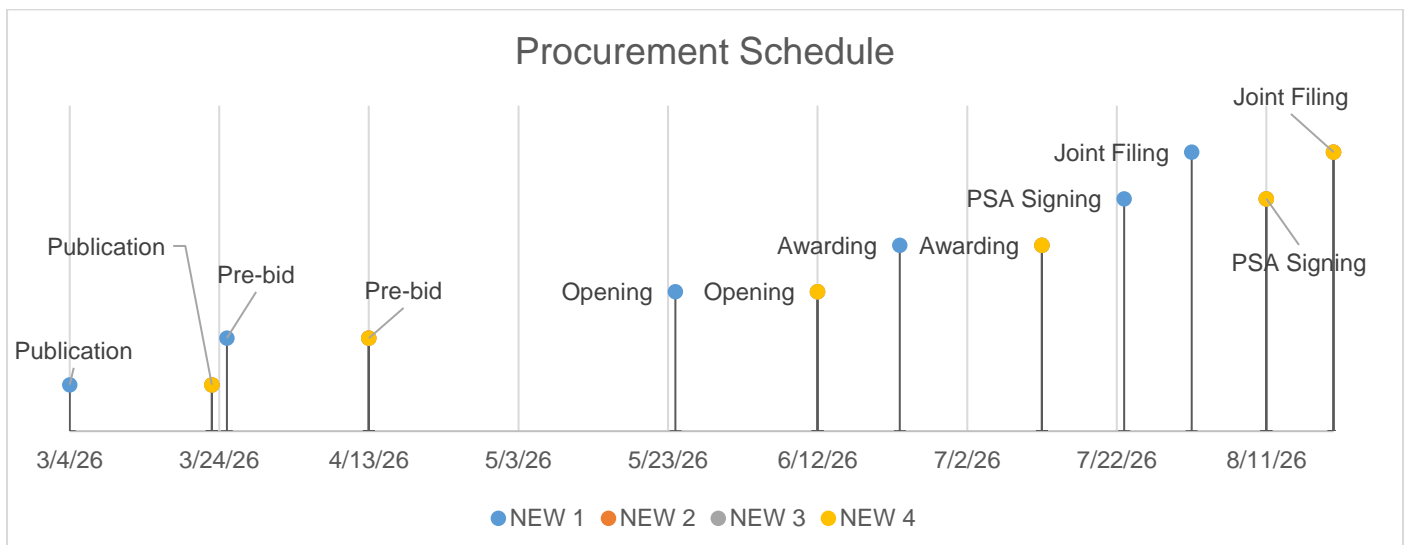
The PSA with GNPower Mariveles Energy Center Ltd. Co. filed with ERC under Case No. 2007 – 146RC was procured through Competitive Public Bidding. Final Approval to implement the Power Purchase and Sale Agreement (PPSA) was granted to BATELEC II on March 5, 2008. The said contracted capacity provides the base load, intermediate and peaking requirements of BATELEC II. Historically, the utilization of the PSA is 70% minimum capacity factor but amended to 65% on year 2017.

While the PSA with Bac-Man Geothermal, Inc. filed with ERC under Case No. 2022-012RC was procured through Competitive Selection Process for the additional 5MW. Last May 18, 2022, Final Approval to implement the Power Purchase and Sale Agreement (PPSA) was granted to BATELEC II.

| Case No. | Type | GenCo  | Minimum MW | Minimum MWh/yr | PSA Start  | PSA End    |
|----------|------|--|------------|----------------|------------|------------|
| EPSA     | Base | Southwest Luzon Power Generation Corporation | 30.00      | 262,800        | 12/26/2025 | 12/25/2026 |

BATELEC II has entered into an Emergency Power Supply Agreement with Southwest Luzon Power Generation Corporation for the supply of 30 MW, covering the period from December 26, 2025 to December 25, 2026, following the expiration of the Cooperative's Power Supply Agreement with PSALM and subject to the on-going filing and approval by the Energy Regulatory Commission (ERC).

|                | NEW 1      | NEW 2      | NEW 3      | NEW 4      |
|----------------|------------|------------|------------|------------|
| Type           | Base       | Base       | Peaking    | Base       |
| Minimum MW     | 30.00      | 115.00     | 10.00      | 10.00      |
| Minimum MWh/yr | 262,800    | 563,316    | 16,644     | 87,600     |
| PSA Start      | 12/26/2026 | 2/26/2029  | 12/26/2026 | 12/26/2026 |
| PSA End        | 12/25/2041 | 12/25/2041 | 12/25/2041 | 12/25/2041 |
| Publication    | 3/4/2026   | 3/23/2026  | 3/23/2026  | 3/23/2026  |
| Pre-bid        | 3/25/2026  | 4/13/2026  | 4/13/2026  | 4/13/2026  |
| Opening        | 5/24/2026  | 6/12/2026  | 6/12/2026  | 6/12/2026  |
| Awarding       | 6/23/2026  | 7/12/2026  | 7/12/2026  | 7/12/2026  |
| PSA Signing    | 7/23/2026  | 8/11/2026  | 8/11/2026  | 8/11/2026  |
| Joint Filing   | 8/1/2026   | 8/20/2026  | 8/20/2026  | 8/20/2026  |

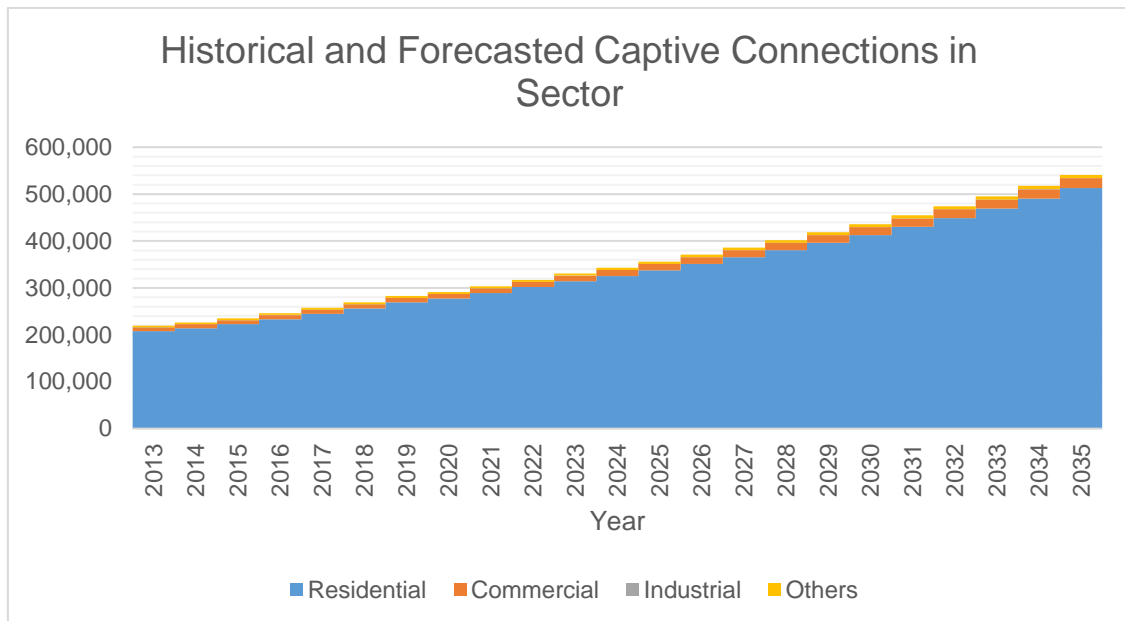


To further strengthen its supply portfolio, the Cooperative has identified the need to procure an additional 30 MW baseload capacity from renewable energy sources in compliance with the Renewable Portfolio Standard (RPS). This requirement is scheduled to commence on December 26, 2026, with a corresponding annual energy requirement of 262,800 MWh. The proposed contract shall have a term of fifteen (15) years, ending on December 25, 2041. In the same manner, the procurement of an additional 115 MW baseload capacity is programmed to commence on February 26, 2029, and will likewise run until December 25, 2041. This additional capacity is intended to support projected load growth and ensure long-term supply adequacy and reliability for the Cooperative's franchise area.

Meanwhile, a 10 MW embedded solar power project is expected to be operational by the end of 2026, augmenting BATELEC II's available capacity and contributing to its renewable energy portfolio. In addition, another 10 MW power supply will be secured beginning January 2027 to further strengthen the Cooperative's capacity position and reduce exposure to spot market price volatility.

These bilateral contracts are intended to fully address the power requirements of BATELEC II by ensuring a stable and reliable supply portfolio, while at the same time providing protection against price volatility in the spot market.

# Captive Customer Connections



The number of residential connections is expected to grow at a rate of 4.2% annually. Said customer class is expected to account for 94.68% of the total consumption.

The historical data inputted in Others, segregated as Water Systems data and All Others data in the submitted 2023- 2033 PSPP are now the actual and final data. The corrected classifications is All Others for year 2013 to 2020 and Water Systems for 2021 onwards.

Prepared by:

**ENGR. RAQUEL O DE CASTRO**

Energy Trading Division Chief- Office of the Assistant Manager

**IAN JIM S. LAQUI**

Corporate Planning Department Manager

**ENGR. SHERYL K. SAMSON**

Engineering Services Department Manager

Approved by:

**ENGR. OCTAVIOUS M. MENDOZA**

General Manager